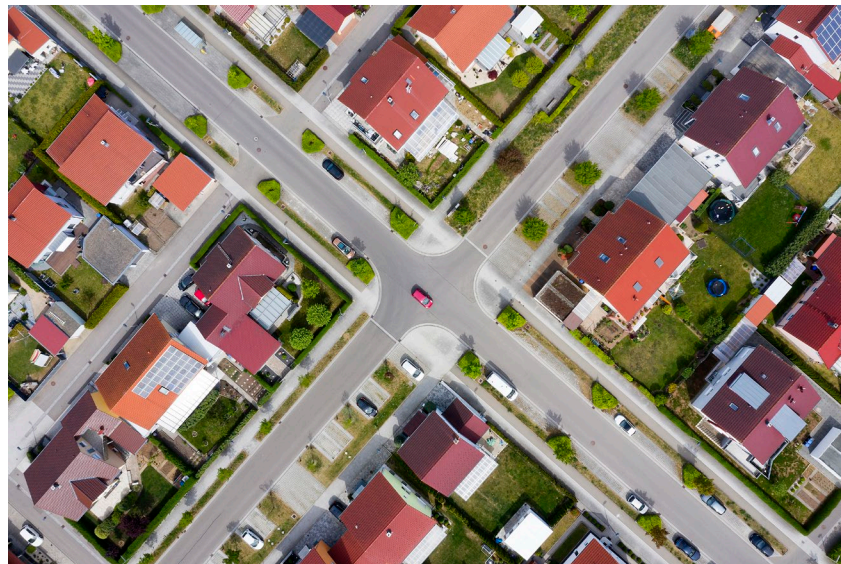




**Vaudreuil
— Dorion**



RADON DETECTOR DISTRIBUTION - 2023

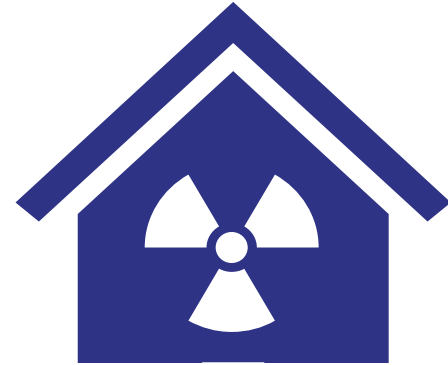
Order of presentation:

1. What is radon?
 - Description
 - Problematic
 - Magnitude of the situation
2. Radon Guidelines
3. Grant for the purchase of a radon detector
4. Steps – Radon detector steps
5. Radon mitigation measures



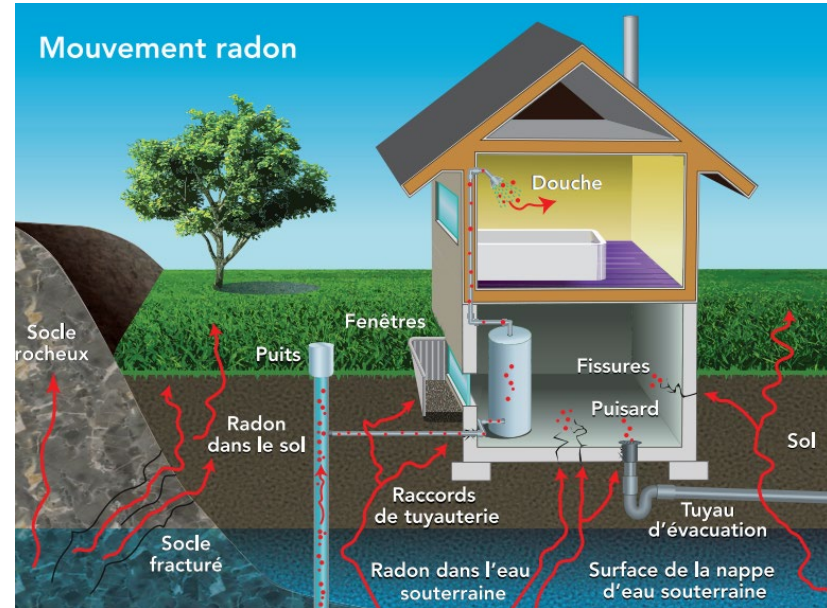
Description:

- Radioactive gas from the breakdown of uranium;
- Naturally found in the soil, rocks and water;
- Colourless, odourless and tasteless gas;
- Blends with ambient gas in the atmosphere.



Problematic

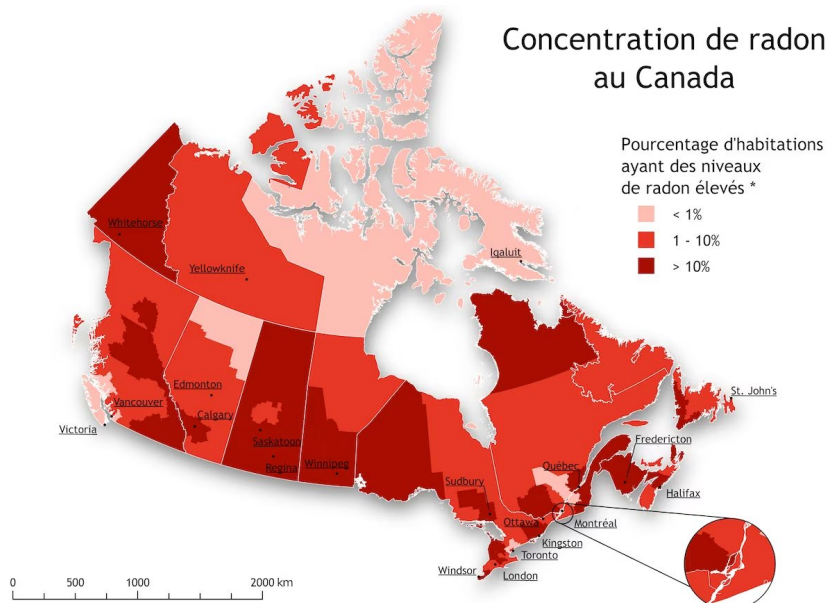
- Health risk when concentrated in certain rooms of the house;
- Second leading cause of lung cancer in Quebec;
- Several factors influence radon concentration:
 - Atmospheric conditions;
 - Soil characteristics;
 - Ventilation;
 - Condition of the foundations.



(Association Canadienne de l'Immeuble)

Magnitude of the situation:

- No radon-free region in Canada
- 7% of Canadians live in a residence where the radon concentration is above the guideline of 200 Bq/m³ (Santé Canada, 2011)



(Santé Canada)

Health Canada recommendations regarding corrective measures for radon concentration

- 1. Adoption of corrective measures within two years:** Health Canada recommends the adoption of measures aimed at reducing the concentration of radon within two years if the results of the radon measurements are between 200 and 600 Bq/m³.
- 2. Adoption of corrective measures within one year:** Health Canada recommends the adoption of measures aimed at reducing the concentration of radon within one year if the results of the radon measurements are higher than 600 Bq/m³.



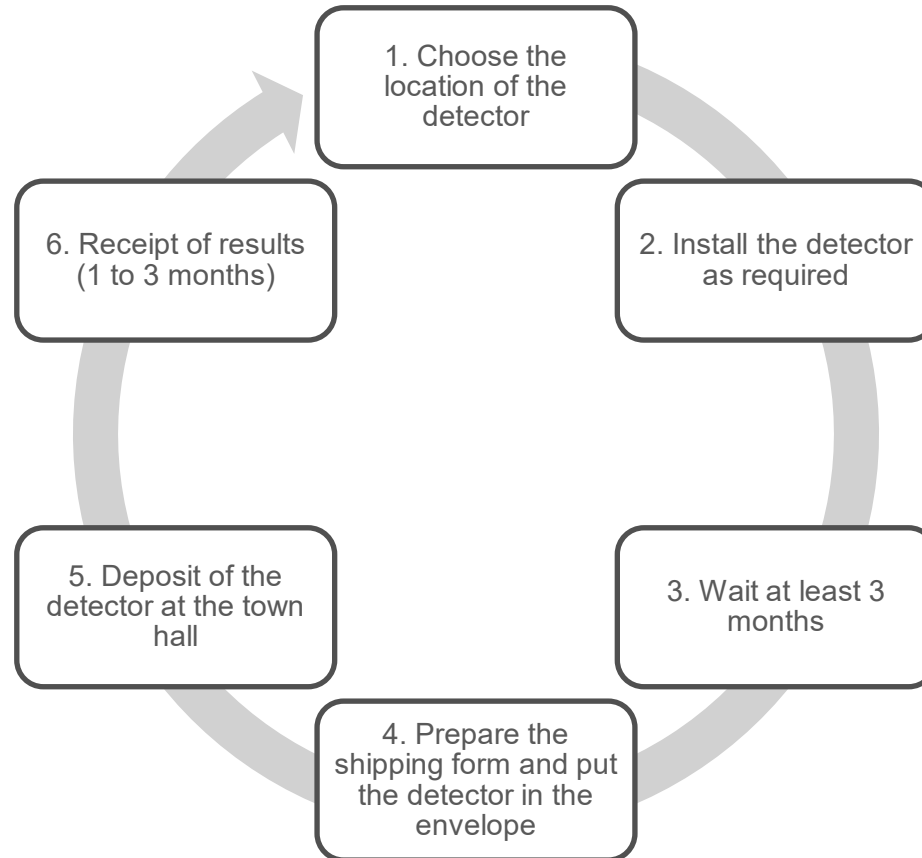
There is no concentration considered without risk. It is up to each owner to assess the accepted exposure.

You will receive:

- A radon information leaflet;
- A letter from the Quebec Lung Association;
- An instruction sheet for the long-term radon test;
- An information sheet for the analytical laboratory;
- A plastic bag;
- An envelope for individual mailing;
- A radon detector for a long-term measurement test.

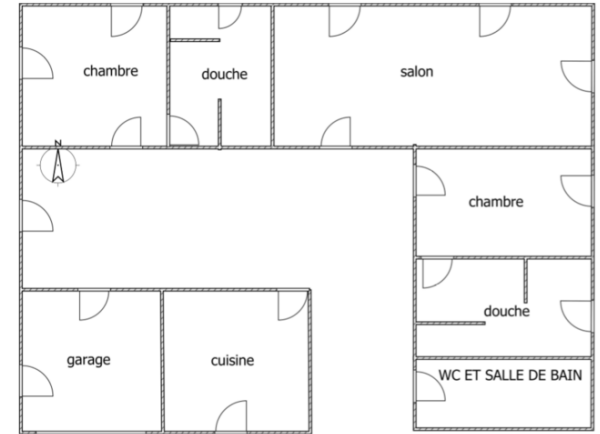


Steps for radon detection



4.1 Choose the location of the detector

- The detector is used to detect the level of exposure of the occupants of the house;
- Must be located in a normally occupied area (at least 4 hours) on the lowest level of the house;
- EX: Bedroom, playroom, office

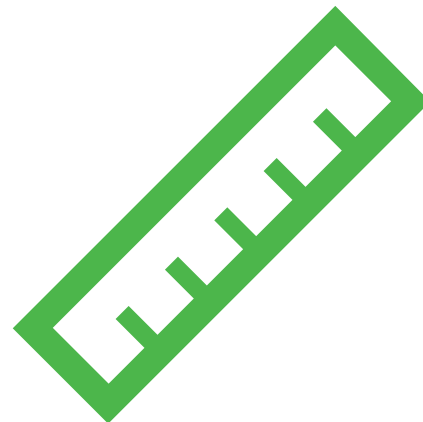


Placing the detector

- 40 cm from an interior wall or 50 cm from an exterior wall;
- Between 0.8 m and 2 m from the floor, but at least 50 cm from the ceiling and 20 cm from any other object;
- At least 1.5 m from any draft;

Éviter de placer le détecteur près :

- Drafts (doors and windows),
- Heat sources (radiator, heater, etc.);
- Electronic appliances;
- Enclosed area (closet, etc.).



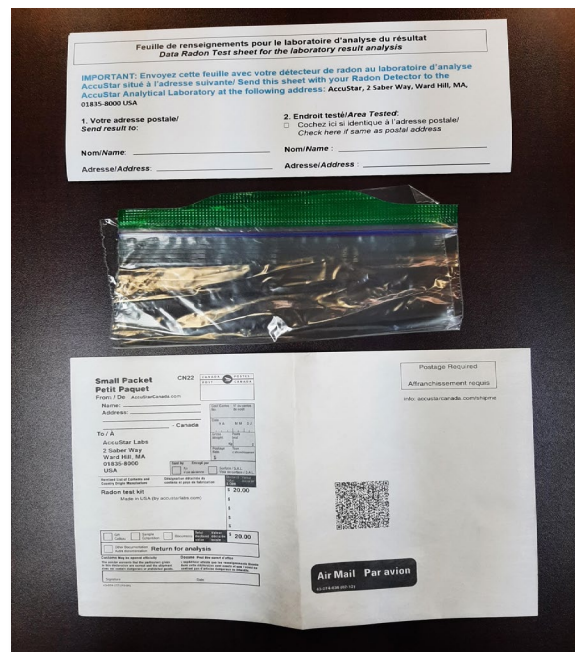
- The ideal period is between November and April (Heating period → less air circulation);
- The detector must remain in the same place for the entire duration of the test;
- The detector must be installed for a minimum of 3 months and a maximum of 12 months.



Schedule a reminder on your calendar to indicate the end date of your test

4.4 Prepare the submission form

- Complete the information sheet for the laboratory;
- Put the detector in the zipper bag;
- Seal the envelope for mailing;
- Enter your address and the requested contact information.



The City of Vaudreuil-Dorion offers a group mailing service(

Submission between April 8 and April 18, 2024

In the envelope provided for this purpose, submit:

- The detector
- The information sheet for the laboratory



Schedule a reminder on your calendar
for the deposit



- You will receive the results 1 to 3 months after the mailing;
- They will be emailed, from the US lab;
- If you do not receive your results after 3 months, you can collect them yourself via the address available in the bottom section of the form.



What to do according to the results?

Less
than
200
Bq/m³

The risk is weak. It is up to the owner to determine whether or not they adopt mitigation measures.

Between
200 and
600
Bq/m³

It is recommended that mitigation measures be adopted within two years.

More
than
600
Bq/m³

It is recommended that mitigation measures be adopted within one year.



Do business with a PNCR-C certified contractor to lower radon concentrations.

Grant for the installation of a radon concentration mitigation system

- Reimbursement of 50% of installation costs for such a system, up to \$500 per residence when the results obtained exceed the Canadian action level of 200 Bq/m³.
- Visit the City's website for more details.



Questions?